



MONTHLY MEMBERSHIP PROGRESS REPORT

District 324A4

Results as of: 2/17/2014 11:17:44AM

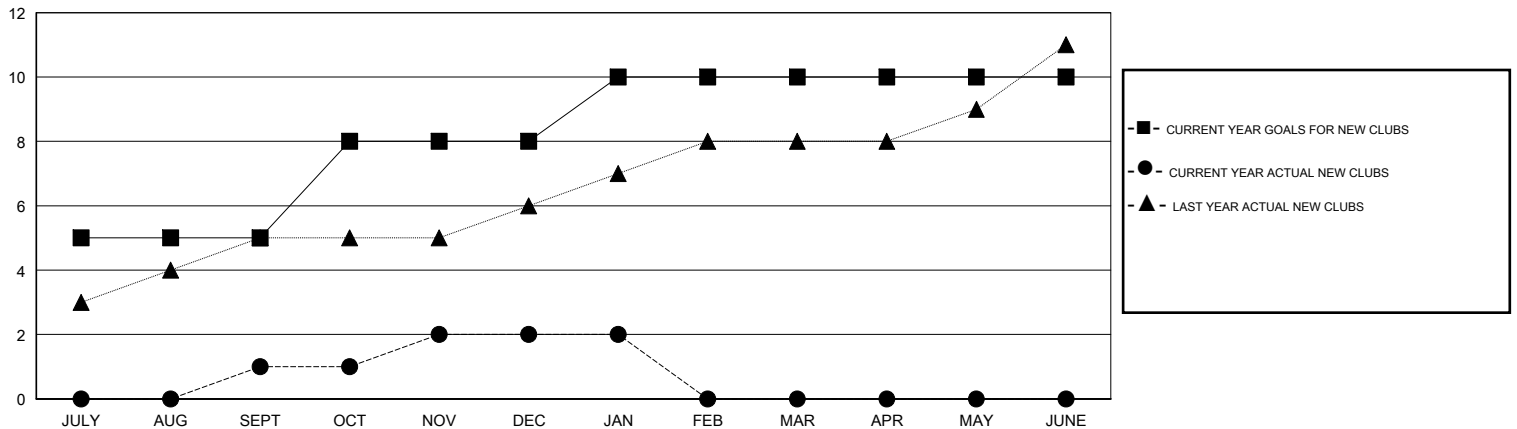
GMT: M NAGARAJAN

LOCATION INDIA

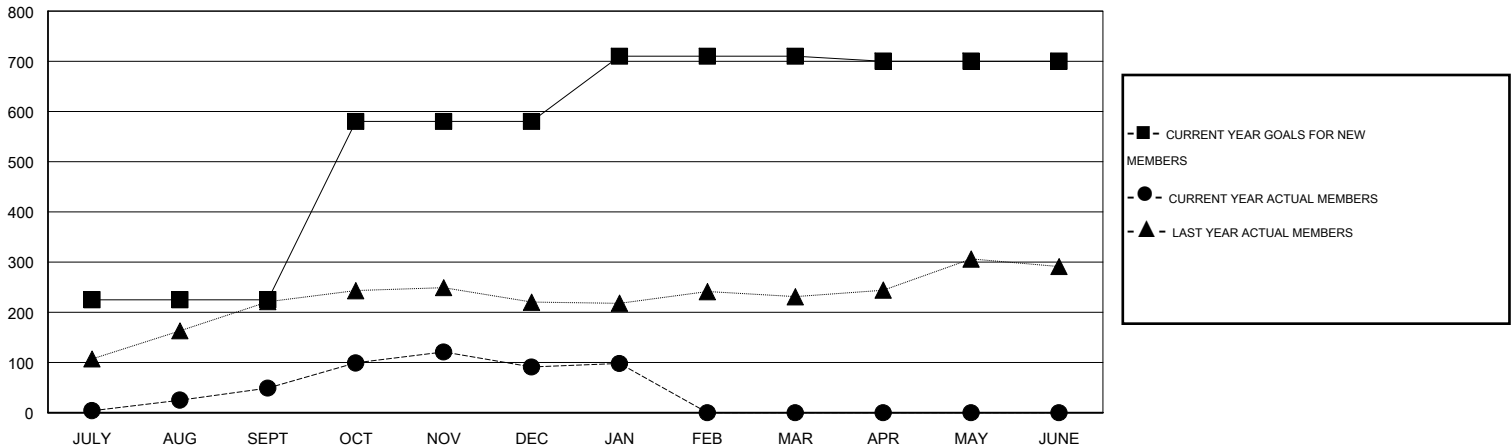
GMT CA 6

| Clubs | | | | | Members | | | | |
|-----------------------|---------------|------------------|----------------------|----------------------|-----------------------|-----------------|--------------------|------------------------|----------------------|
| RESULTS FOR 2013-2014 | | | | | RESULTS FOR 2013-2014 | | | | |
| QUARTER | NEW CLUB GOAL | ACTUAL NEW CLUBS | ACTUAL DROPPED CLUBS | ACTUAL NET GAIN/LOSS | QUARTER | NEW MEMBER GOAL | ACTUAL NEW MEMBERS | ACTUAL DROPPED MEMBERS | ACTUAL NET GAIN/LOSS |
| JULY/AUG/SEPT | 5 | 1 | 0 | 1 | JULY/AUG/SEPT | 225 | 195 | 146 | 49 |
| OCT/NOV/DEC | 3 | 1 | 2 | -1 | OCT/NOV/DEC | 355 | 107 | 65 | 42 |
| JAN/FEB/MAR | 2 | 0 | 0 | 0 | JAN/FEB/MAR | 130 | 10 | 3 | 7 |
| APR/MAY/JUNE | 0 | 0 | 0 | 0 | APR/MAY/JUNE | -10 | 0 | 0 | 0 |

GOALS AND ACTUAL NEW CLUBS CUMULATIVE



GOALS AND ACTUAL MEMBERS CUMULATIVE



| | | | |
|------------------------|---|----------------------------|----------------|
| DROPPED CLUBS: 2 | 54 CLUBS OF 93 ADDED 1 OR MORE NEW MEMBERS | <u>GENDER DISTRIBUTION</u> | |
| <u>DROPPED MEMBERS</u> | | MALE | 2,952 (92.80%) |
| DECEASED | CLICK HERE FOR HEALTH ASSESSMENT DATA | FEMALE | 229 (7.20%) |
| CLUB CANCELLED | | FAMILY UNIT MEMBERS | 293 |
| OTHER | | HEAD OF HOUSEHOLD | 136 |
| TOTAL | | NON-HEAD OF HOUSEHOLD | 157 |